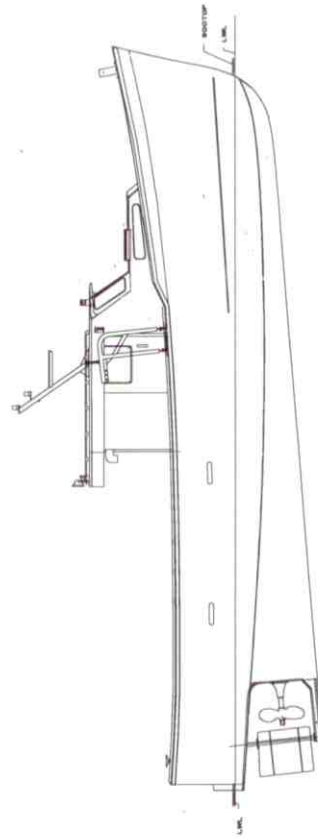
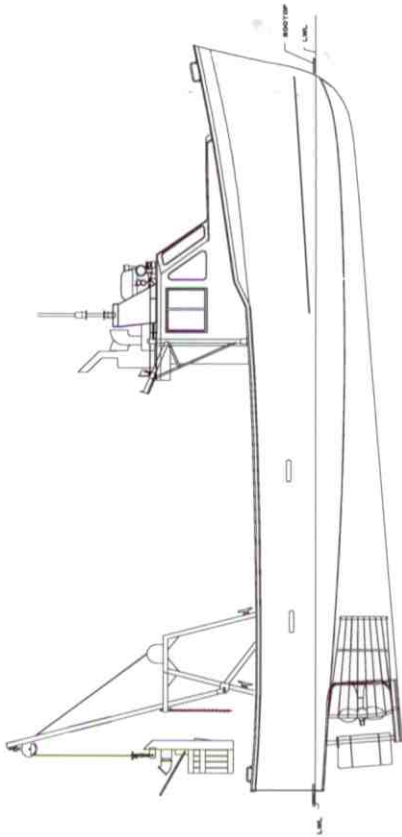


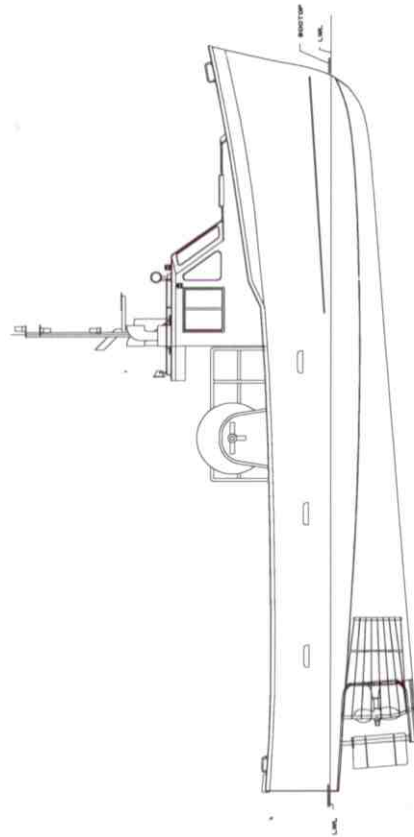
SWORDFISH/LOBSTER BOAT



AMERICAN STYLE LOBSTER BOAT
(WHEELHOUSE MOVED AFT 3 FT.)



CLAM DREDGER/LOBSTER BOAT



LONGLINER/DRAGGER

DESIGN C. CUNNINGHAM APPROVED DATE JUNE 19, 1998 SCALE 1/4" = 1'-0"	BUILT FOR DIXON AS VARIOUS FISHING CONFIGURATIONS DRAWING NO.	U.S. NO.
		DIXON'S SHIPYARD LAYERS WELDON/ALABAMA 98

